

SUSTAINABLE LEATHER®

DANI

acquario
collection

acquario 7 colours

SCHEDA TECNICA / TECHNICAL SHEET

Pelle bovina di origine europea conciata al cromo
Chrome tanned bull hides with European origin

Anilina - pieno fiore - tintura all'anilina passante in botte
Aniline - full grain - through-dyeing aniline

SPESSORE / THICKNESS 1.0 - 1.2 mm

TEST SOLIDITÀ DEL COLORE / COLOR FASTNESS

Proprietà / Property

Solidità del colore allo strofinio a secco - 50 cicli
Dry rub fastness - 50 cycles

Norma / Test method

UNI EN ISO 11640

Prestazioni / Performance

≥3 Scala Grigi / Grey Scale

Solidità del colore allo strofinio a umido - 20 cicli
Wet rub fastness - 20 cycles

UNI EN ISO 11640

≥3 Scala Grigi / Grey Scale

Solidità del colore allo strofinio con sudore alcalino - 20 cicli
Alkaline perspiration rub fastness - 20 cycles

UNI EN ISO 11640

≥3 Scala Grigi / Grey Scale

Solidità del colore alla luce artificiale
Light fastness

UNI EN ISO 105-B02

≥3 Scala Blu / Blue Scale

TEST FISICI / PHYSICAL CHARACTERISTICS

Proprietà / Property

Resistenza alla lacerazione
Tear resistance

Norma / Test method

UNI EN ISO 3377-1

Prestazioni / Performance

≥ 20 N

TEST INFIAMMABILITÀ / FLAMMABILITY


Cigarette test - Match test
FS191 Method 5903-Port Authority of New York & New Jersey
IMO Resolution A.652 (16)
California TB 117 Section E


UNI EN 1021-1 - UNI EN 1021-2


Conforme / Complies
Conforme / Complies
Conforme / Complies
Conforme / Complies

L'articolo è realizzato nel rispetto della direttiva REACH / Our leather is processed in conformity with REACH regulation

PULIZIA E MANUTENZIONE / CLEANING AND MAINTENANCE

 Evitare la luce diretta del sole
Avoid placing leather in direct sun

 Evitare l'esposizione a fonti di calore
Keep the leather away from direct heat

 Spolverare regolarmente la pelle con un panno morbido ed asciutto
Dust regularly with a soft and dry cloth

CERTIFICAZIONI / CERTIFICATIONS



UNI 11239

EPD®

ISO 14025



ISO 14067/CD2



RAL-UZ 148



RAL-GZ 430

SUSTAINABLE LEATHER®
DANI

DANI s.p.a.

Sede Legale e Amministrativa:

Z.I. Via Della Concia, 186

36071 Arzignano (VI) Italy

p.iva 00552430985

info@gruppodani.it - www.gruppodani.it

Divisione Home Style & Fashion:

Z.I. 4ª Strada, 20 - 36071 Arzignano (VI) Italy

tel. +39 0444 471211 - fax +39 0444 450839

DANI Leather USA, Inc.

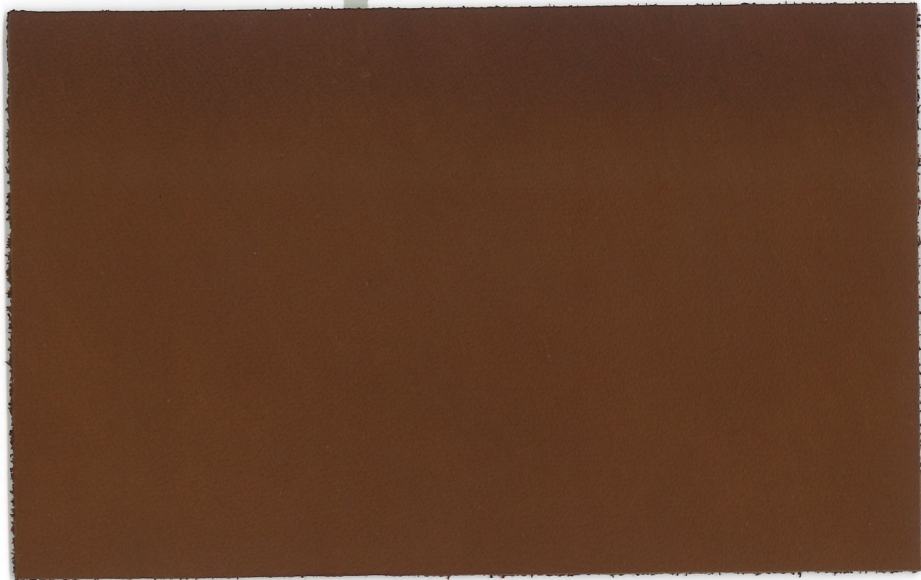
37 Ironia Road, Flanders, NJ 07836

tel. +1973 598 0890 - fax +1973 598 0893

www.danileatherusa.com



acquario



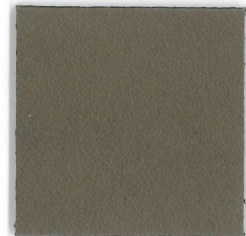
Die Farben „Polvere“ und „Collant“ sind für Diagon Executive nicht lieferbar

Les couleurs „Polvere“ et „Collant“ ne sont pas livrables pour Diagon Executive

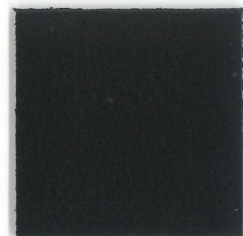
The colours "Polvere" and "Collant" are not available for Diagon Executive



POLVERE



FANGO



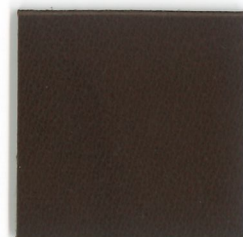
ANTRACITE



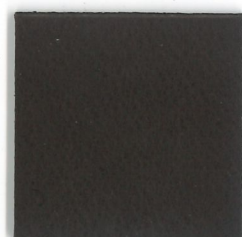
COLLANT



CUOIO



MARRONE



T. MORO



acquario

