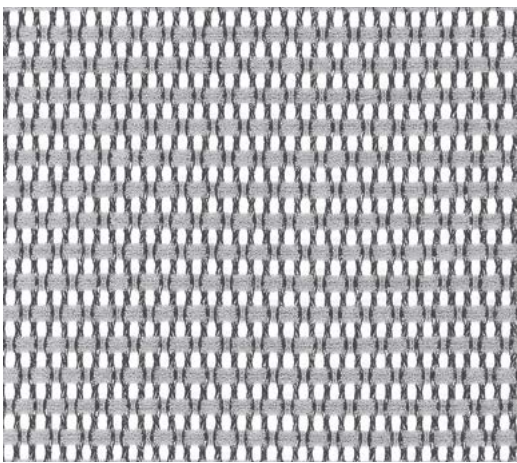
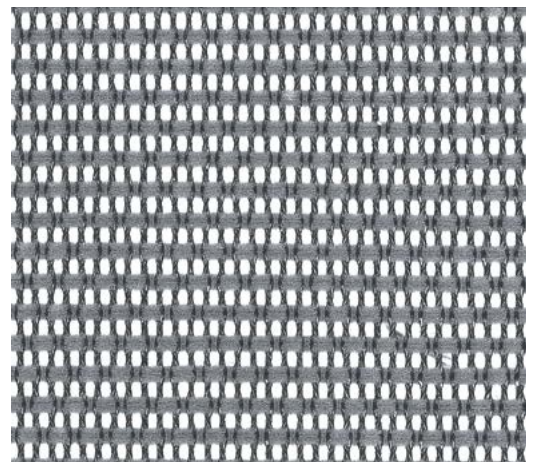


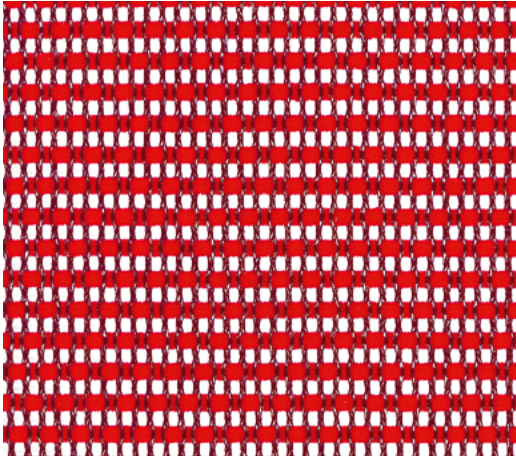
4341



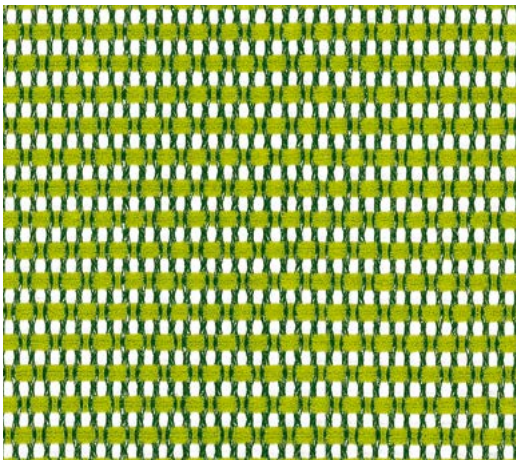
4298



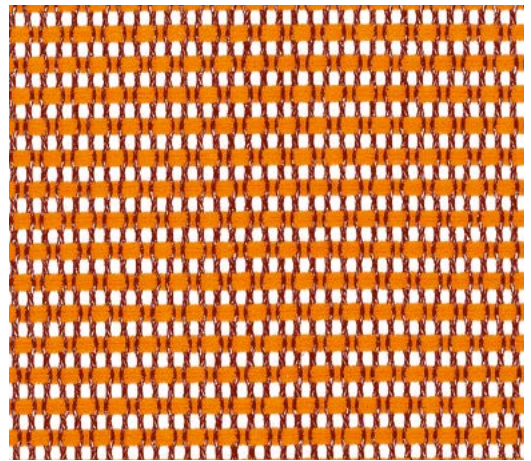
4299



4308



4389



4306

Anwendungsbereich	Objektbereich, Büros	
Material	PA66 / PET	40% / 60%
Gewicht	pro lf. Meter ca. Gramm	360
Breite	cm	144
Scheuerfestigkeit	Scheuertouren EN ISO 12947 / 00	100 000
Pilling	Skala 1-5, EN ISO 12945 / 02	5
Lichtechtheit	Skala 1-8, EN ISO 105-B04	8

Application	Collectivités, bureaux	
Composition	PA66 / PET	40% / 60%
Poids	par mètre linéaire approx. gr.	360
Largeur	cm	144
Résistance à l'usure	tours EN ISO 12947 / 00	100 000
Boulochage	échelle 1-5, EN ISO 12945 / 02	5
Résistance à la lumière	échelle 1-8, EN ISO 105-B04	8

Fields of application	Public and commercial buildings, offices	
Material	PA66 / PET	40% / 60%
Weight	lin. metre approx. grams	360
Width	cm	144
Abrasion resistance	rubs EN ISO 12947 / 00	100 000
Pilling	scale 1-5, EN ISO 12945 / 02	5
Colour fastness to light	scale 1-8, EN ISO 105-B04	8

Toepassingsgebied	Projecten, kantoren	
Materiaal	PA66 / PET	40% / 60%
Gewicht	per mtr. in gr. ca.	360
Breedte	in cm.	144
Slijtvastheid	toeren EN ISO 12947 / 00	100 000
Pilling	schaal 1-5, EN ISO 12945 / 02	5
Kleurechtheid	schaal 1-8, EN ISO 105-B04	8

Girsberger AG, Bützberg, CH
 Girsberger GmbH, Wien, A
 Girsberger France, Paris, F
 Girsberger GmbH, Endingen, D
 Girsberger Benelux BV, Naarden - Vesting, NL
 Tuna Girsberger Tic. AS Silivri, TR

mail@girsberger.com
www.girsberger.com