



Danielle Quaille to succeed Michael Girsberger as CEO

Change of leadership in the Girsberger Group from August 2023

Next year – the 135th in the history of Swiss furniture manufacturer Girsberger based in the canton of Bern – will see a new generation take the helm. After 30 years as CEO of Girsberger Holding AG and as the fourth generation in the family business, Michael Girsberger will hand over the leadership of the company on 1 August 2023. He will be succeeded by Danielle Quaille, currently Managing Director of Girsberger AG. Davide Mastrodomenico, currently Head of the Girsberger Customized Furniture and Remanufacturing business units, will assume responsibility as the new Managing Director of Girsberger AG on the same date. Moving into the fifth generation of management, Girsberger will remain an independent, family-owned company with Michael Girsberger and his brother Jürg Girsberger as shareholders.

Bützberg 19 October 2022 – With a view to ensuring a timely change of generation in the 135th year of Girsberger's history, Michael Girsberger will step down as CEO of Girsberger Holding AG on 31 July 2023 after reaching the age of 65. As of 1 August 2023, the fifth generation of management will begin leading the Girsberger Group into the future. The company has evolved significantly over the past few years, in an extensive process of change and diversification involving a lot of work and major investments. For Michael Girsberger, an important element in this change of management is that the company continues to make the best of both tradition and transformation.

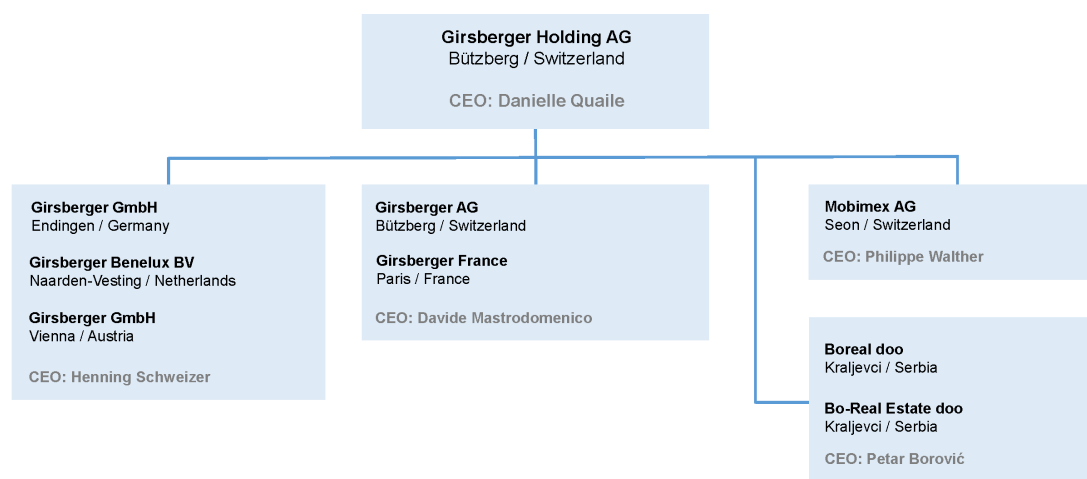
With this in mind, he is handing over responsibility to experienced leaders who have demonstrated their competence and trustworthiness through many years of service and innovation within the company. As his successor as CEO of Girsberger Holding AG, Danielle Quaille will take responsibility for the leadership of the Group with the subsidiaries Girsberger AG (Switzerland), Girsberger GmbH (Germany), Mobimex AG (Switzerland), Boreal doo and Bo-Real Estate doo (Serbia).

Since 2018, Danielle Quaile has been Managing Director of Girsberger AG with market responsibility for Switzerland and France, as well as central responsibility for the Girsberger Home, Customized Furniture, Remanufacturing and Timber Trade business units.

Davide Mastrodomenico, currently a member of the Executive Board of Girsberger AG and Head of the Customized Furniture and Remanufacturing business units, has been appointed to succeed her as Managing Director of Girsberger AG (Switzerland), including the French market, as of 1 August 2023. It is not yet known who will succeed him in his current role.

Michael Girsberger will join the Board of Directors of Girsberger Holding AG after withdrawing from operational business.

Management of the other subsidiaries will remain unchanged: Henning Schweizer, CEO of Girsberger GmbH (Germany) including Girsberger Benelux and the Austrian market; Philippe Walther, CEO of Mobimex AG (Switzerland) with the brands Zoom by Mobimex and Studio by Mobimex, and Petar Borović, CEO of Boreal doo and Bo-Real Estate doo (Serbia).



Organisational chart of the Girsberger Group with subsidiaries as of 1 August 2023

About Girsberger:

The Swiss company group was established in 1889 as a woodworking shop in Zurich, and has developed to become an internationally renowned manufacturer of seating furniture. In the course of its development, the company has also specifically expanded its in-house manufacturing operations and its exceptional craftsmanship in the areas of upholstery, solid wood and surface processing. Today its range of products and services includes high-quality furniture for offices, public spaces and homes, customized commercial furniture and the restoration and upcycling of used furniture (Remanufacturing). From Koblenz in Canton Aargau, close to the border with Germany, the timber trade unit supplies all types of wood-processing businesses with top-quality solid wood. Girsberger also has sales companies outside Switzerland, in a number of European countries. The Girsberger production facilities are located in Bützberg (Switzerland), Endingen (Germany) and Kraljevci (Serbia). Since 1993 the international company group is managed by Michael Girsberger, who is the great-grandson of the company's founder.

Girsberger introduced climate-neutral production in 2015 and was awarded the EcoVadis gold medal for its transparent, sustainable supply chain in 2019.

For more detailed information about the company visit www.girsberger.com / www.zoombymobimex.com / www.studiobymobimex.com / www.girsbergerholz.com

Media contact:

Dorothea Scheidl-Nennemann
Public Relations Manager – Girsberger Group
Girsberger GmbH
Ersteiner Strasse 2
D-79346 Endingen

Tel. +49 (0)162 130 04 57
www.girsberger.com
dorothea.scheidl@girsberger.com

